

Round U Bolt and Nut Kit

Thread Type: Metric - Coarse

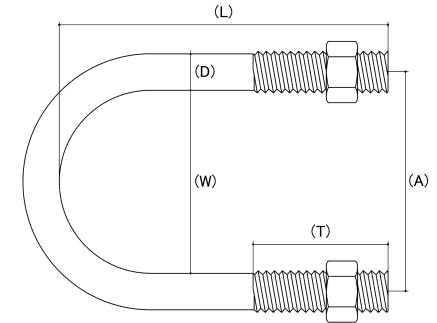
Material: Mild Steel

Class Grade: Low Tensile Class 4.6

Finish: Galvanised

Corrosion Protection Level: Excellent

Standard: Made to Hobson Engineering Standard



*CAD drawings shown for graphic representation only.**

Size	Thread Pitch (mm)	Thread Type	Inside Width (W) (mm)		Centre Width (A) (mm)		Overall length Inside (L) (mm)		Thread Length Per Leg (T) (mm)		Nominal Bore (NB) (mm)	sku (qfind)
			Min	Max	Min	Max	Min	Max	Min	Max	Nom	
M10	1.50	Coarse	20.00	22.00	30.00	32.00	64.00	66.00	39.00	41.00	15.00	58UR102165G
M10	1.50	Coarse	26.00	28.00	36.00	38.00	76.00	78.00	49.00	51.00	20.00	58UR102777G
M10	1.50	Coarse	33.00	35.00	43.00	45.00	84.00	86.00	49.00	51.00	25.00	58UR103485G
M10	1.50	Coarse	42.00	44.00	52.00	54.00	93.00	95.00	49.00	51.00	32.00	58UR104393G
M10	1.50	Coarse	47.00	49.00	57.00	59.00	99.00	101.00	49.00	51.00	40.00	58UR1048100G
M10	1.50	Coarse	50.00	52.00	60.00	62.00	102.00	104.00	49.00	51.00	40.00	58UR1051103G
M10	1.50	Coarse	59.00	61.00	69.00	71.00	109.00	111.00	49.00	51.00	51.00	58UR1060110G
M12	1.75	Coarse	75.00	77.00	87.00	89.00	126.00	128.00	49.00	51.00	65.00	58UR1276127G
M12	1.75	Coarse	88.00	90.00	100.00	102.00	139.00	141.00	49.00	51.00	80.00	58UR1289140G
M12	1.75	Coarse	101.00	103.00	113.00	115.00	151.00	153.00	49.00	51.00	90.00	58UR12102152G
M12	1.75	Coarse	113.00	115.00	125.00	127.00	164.00	166.00	49.00	51.00	101.00	58UR12114165G
M12	1.75	Coarse	139.00	141.00	151.00	153.00	189.00	191.00	49.00	51.00	127.00	58UR12140190G
M12	1.75	Coarse	167.00	169.00	179.00	181.00	219.00	221.00	49.00	51.00	150.00	58UR12168220G
M16	2.00	Coarse	218.00	220.00	234.00	236.00	294.00	296.00	74.00	76.00	200.00	58UR16219295G
M20	2.50	Coarse	272.00	275.00	292.00	294.00	369.00	371.00	99.00	101.00	250.00	58UR20273370G

Size	Thread Pitch (mm)	Thread Type	Inside Width (W) (mm)		Centre Width (A) (mm)		Overall length Inside (L) (mm)		Thread Length Per Leg (T) (mm)		Nominal Bore (NB) (mm)	sku (qfind)
			Min	Max	Min	Max	Min	Max	Min	Max	Nom	
M20	2.50	Coarse	323.00	325.00	343.00	345.00	419.00	421.00	99.00	101.00	300.00	58UR20324420G
M20	2.50	Coarse	355.00	357.00	375.00	377.00	454.00	456.00	99.00	101.00	350.00	58UR20356455G
M20	2.50	Coarse	405.00	407.00	425.00	427.00	504.00	506.00	99.00	101.00	400.00	58UR20406505G
M24	3.00	Coarse	456.00	458.00	480.00	482.00	554.00	556.00	99.00	101.00	450.00	58UR24457555G
M24	3.00	Coarse	507.00	509.00	531.00	533.00	604.00	606.00	99.00	101.00	500.00	58UR24508605G
M24	3.00	Coarse	609.00	611.00	633.00	635.00	709.00	711.00	99.00	101.00	600.00	58UR24610710G

Disclaimer:

Dimensional data and technical information was obtained from publically available sources and not acquired through standard agencies. It has been completed and compiled for reference purposes only; where discrepancies are found they are subject to change without notice. Bolt & Nut Australia makes no warranties or representations regarding the accuracy and validity of the compiled information and data. Contact the relevant standard authorities for accurate and detailed information.

* CAD drawings may not reflect diameter, thread length or overall length.

© Bolt & Nut Australia Pty Ltd. All rights reserved.

Version: 18 Mar 2024